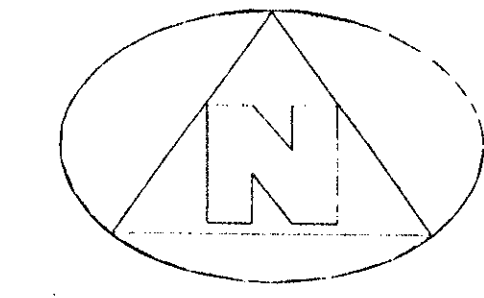
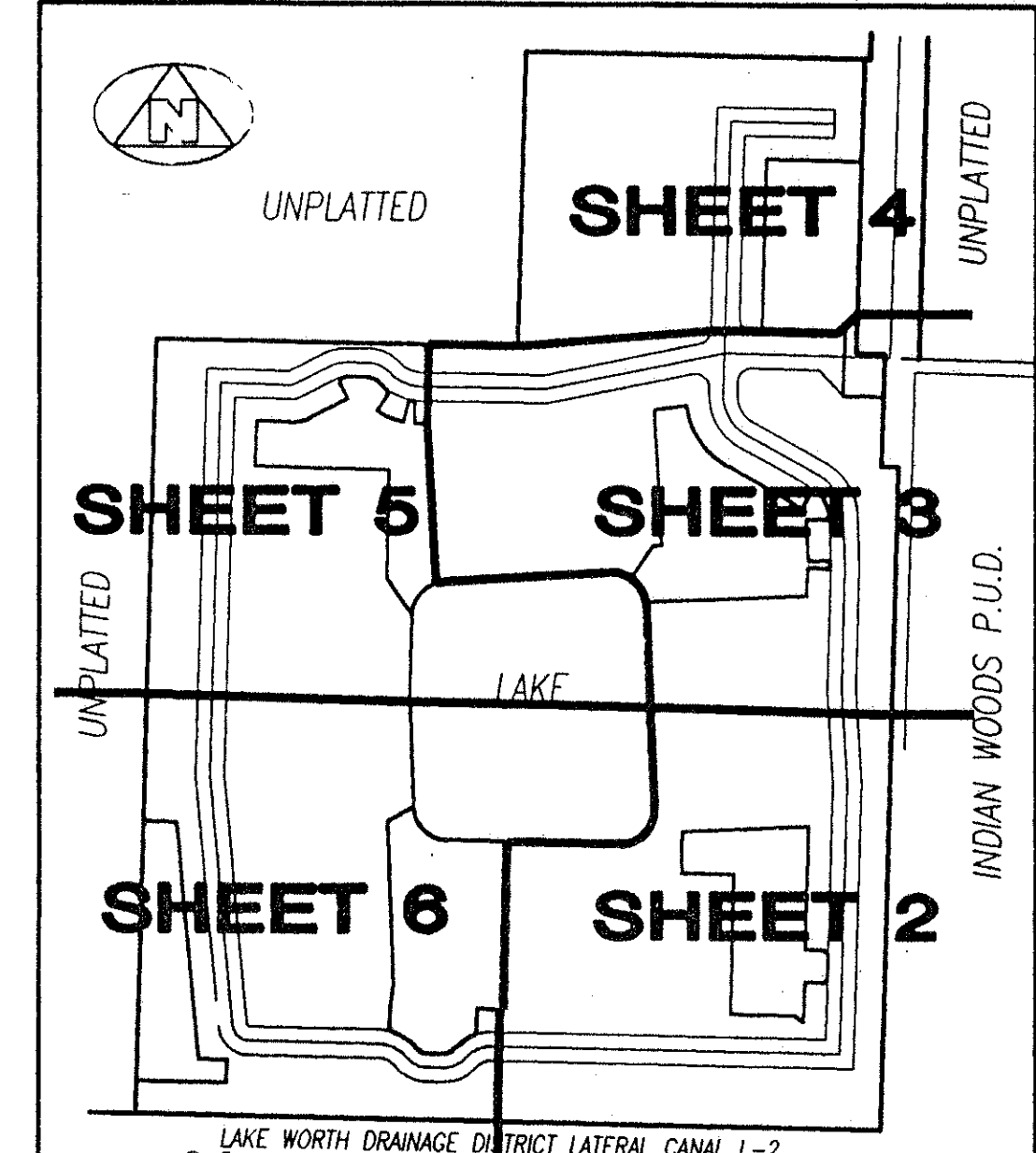


QUAIL WOODS

(A P.U.D.) LYING IN THE NORTHEAST ONE-QUARTER OF SECTION 25, TOWNSHIP 43 SOUTH, RANGE 42 EAST, PALM BEACH COUNTY, FLORIDA
(SEE SHEET 5 of 6)
MATCH LINE



GRAPHIC SCALE
(IN FEET)
SCALE: 1" = 20'



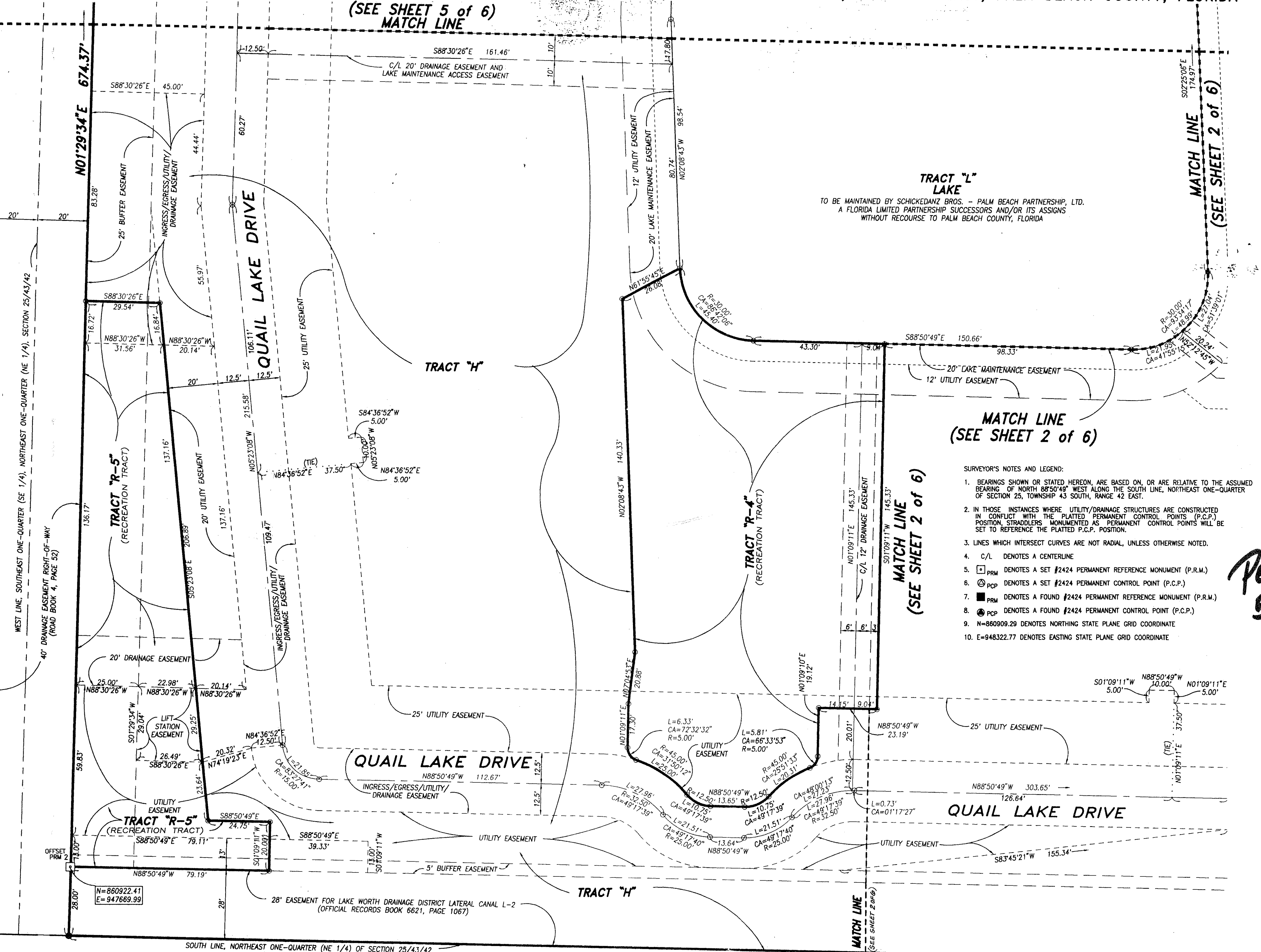
COORDINATE, DISTANCE, AND BEARING NOTES:

1. THE COORDINATES SHOWN HEREON ARE STATE PLANE GRID COORDINATES ACCORDING TO THE TRANSVERSE MERCATOR PROJECTION OF THE FLORIDA EAST ZONE, N.A.D. 83, PER THE 1990 ADJUSTMENT.
2. THE LINEAR DIMENSIONS SHOWN HEREON ARE GROUND DISTANCES IN U.S. FEET AND DECIMAL PARTS THEREOF.
3. THE GROUND DISTANCE TO GRID DISTANCE SCALE FACTOR IS 1.0000395 (GROUND DISTANCE X SCALE FACTOR = GRID DISTANCE)
4. THE COMMON LINE BETWEEN THIS PLAT AND THE PALM BEACH COUNTY SECTIONAL DATUM (N.A.D. 83, 1990 ADJUSTMENT) IS THE SOUTH LINE OF THE NORTHEAST ONE-QUARTER OF SECTION 25, TOWNSHIP 43 SOUTH, RANGE 42 EAST.
COMMON LINE PLAT BEARING = N.88°50'49"W.
COMMON LINE GRID BEARING = N.88°50'51"W.
PLAT TO GRID BEARING COUNTERCLOCKWISE ROTATION = 00°00'02"

MATCH LINE
(SEE SHEET 2 of 6)

- SURVEYOR'S NOTES AND LEGEND:
1. BEARINGS SHOWN OR STATED HEREON, ARE BASED ON, OR ARE RELATIVE TO THE ASSUMED BEARING OF NORTH 88°50'49" WEST ALONG THE SOUTH LINE, NORTHEAST ONE-QUARTER OF SECTION 25, TOWNSHIP 43 SOUTH, RANGE 42 EAST.
 2. IN THOSE INSTANCES WHERE UTILITY/DRAINAGE STRUCTURES ARE CONSTRUCTED IN CONFLICT WITH THE PLATTED PERMANENT CONTROL POINTS (P.C.P.) POSITION, STRADDLERS MONUMENTED AS PERMANENT CONTROL POINTS WILL BE SET TO REFERENCE THE PLATTED P.C.P. POSITION.
 3. LINES WHICH INTERSECT CURVES ARE NOT RADIAL, UNLESS OTHERWISE NOTED.
 4. C/L DENOTES A CENTERLINE
 5. DENOTES A SET #2424 PERMANENT REFERENCE MONUMENT (P.R.M.)
 6. DENOTES A SET #2424 PERMANENT CONTROL POINT (P.C.P.)
 7. DENOTES A FOUND #2424 PERMANENT REFERENCE MONUMENT (P.R.M.)
 8. DENOTES A FOUND #2424 PERMANENT CONTROL POINT (P.C.P.)
 9. N=860909.29 DENOTES NORTHING STATE PLANE GRID COORDINATE
 10. E=948322.77 DENOTES EASTING STATE PLANE GRID COORDINATE

PET. 85-86
5/2/2/E



LAKE WORTH DRAINAGE DISTRICT LATERAL CANAL L-2
(OFFICIAL RECORDS BOOK 1732, PAGE 612)

N88°50'49"W 652.90'

0491-002
75/54

This instrument was prepared by Wm. R. Van Campen, R.L.S., in and for the offices of Bench Mark Land Surveying & Mapping, Inc., 4152 West Blue Heron Boulevard, Suite 121, Riviera Beach, Florida

BENCH MARK
Land Surveying and Mapping, Inc.
4152 West Blue Heron Blvd., Suite 121, Riviera Beach, FL 33404
(407) 844-3653

RECORD PLAT		QUAIL WOODS		A P.U.D.	
DWN	DJM	DATE	NO.	PI	
CKD	FILE	SCALE	SHEET		OF
	P10-42.dwg	1" = 20'	6		6

SUBDIVISION: Quail Woods
BOOK 75 PAGE 54
FLOOD ZONE B FLOOD MAP #155B
QUAD # 31 ZONING R/H
SE 85-86(B) ZIP CODE 33409
PUB NAME JOMY
514314